



Reporte de Aceptación de Certificado Tipo



Type Certificate Acceptance Report

CAAI TC No. A6IL Rev. 13-1 Jan 2010

Gulfstream Aerospace L.P.
GALAXY
GULFSTREAM 200



TABLA DE CONTENIDO
(TABLE OF CONTENTS)

RESUMEN (SUMMARY)	3
1. INTRODUCCIÓN (INTRODUCTION)	3
2. DETALLES DE CERTIFICACIÓN DE TIPO OACI (ICAO TYPE CERTIFICATE DETAILS)	4
3. DETALLES DE ACEPTACIÓN DE TIPO (TYPE ACCEPTANCE DETAILS)	4
4. REQUERIMIENTOS DE LOS R.A.C. PARTE NOVENA (COLOMBIAN R.A.C. PART 9TH DATA REQUIREMENTS)	5
5. REQUERIMIENTOS ADICIONALES DE LOS R.A.C. PARTE CUARTA (ADDITIONAL COLOMBIAN REQUIREMENTS R.A.C. PART 4TH)	9
APENDICE 1 - LISTA DE CHEQUEO DE AERONAVES (APPENDIX 1 – AIRCRAFT CHECK LIST)	11
APENDICE 2 - ADJUNTOS (APPENDIX 2 - ATTACHMENTS)	14



RESUMEN (SUMMARY)

La aceptación de Tipo Colombiana ha sido otorgada para los modelos GALAXY y GULFSTREAM 200, de la Empresa Gulfstream Aerospace L.P, basados en el Certificado Tipo CAAI TC No. A6IL Rev 13-1 de Enero 2010.

La aplicabilidad es para los modelos GALAXY y GULFSTREAM 200, los cuales son elegibles para la emisión de un certificado de Aeronavegabilidad estándar de acuerdo con los Reglamentos Aeronáuticos Colombianos RAC numeral 4.4.1.8., esta aceptación estará sujeta a cualquier requerimiento excepcional operacional que requiera ser cumplido (Ver ítem 5 de este reporte para una revisión del cumplimiento del diseño básico con las reglas operacionales nacionales).

Colombian Civil Aviation Authority grants Type Certificate Acceptance for the models GALAXY y GULFSTREAM 200, of the Gulfstream Aerospace L.P, based on the CAAI Type Certificate No. A6IL Rev 13-1 January 2010.

Applicability is for the GALAXY y GULFSTREAM 200 models, which are eligible for the issue of a Standard Airworthiness Certificate according to Colombian Regulations - RAC section 4.4.1.8. This Acceptance is subject to any outstanding Colombian operational requirement being met. (See item 5 of this report for review of compliance of the basic type design with the Colombian operating rules).

1. INTRODUCCIÓN (INTRODUCTION)

Este reporte detalla los aspectos para la aceptación del Certificado Tipo de la CAAI No. A6IL, de acuerdo con los RAC Parte 9ª literal **9.1 (d)** y **9.2.3**, con el objeto de emitir un Certificado de Aeronavegabilidad Estándar en Colombia.

This report details the basis on which the CAAI TC No. A6IL was accepted, in accordance with the RAC's, part § 9.1 (d) and 9.2.3, in order to issue a Colombian Standard Airworthiness Certificate.

Específicamente este reporte está dirigido a:
Specifically the report aims to:

(a) Determinar los estándares de diseño del código de aeronavegabilidad asociados al certificado tipo extranjero para la aceptación de este modelo de aeronave en Colombia.	(a) <i>State Design standards of the airworthiness code related to the foreign Type Certificate for the acceptance of this aircraft model in Colombia.</i>
(b) Identificar cualquier condición especial, nivel equivalente de seguridad o excepción aplicable al modelo cubierto por el Certificado Tipo.	(b) <i>Identify any special condition, Safety Equivalent Level, or applicable exception to a model covered by the Type Certificate.</i>



Unidad Administrativa Especial de Aeronáutica Civil
REPORTE DE ACEPTACIÓN DE CERTIFICADO DE TIPO
(Type Certificate Acceptance Report)

Page 4

(c) Establecer cualquier requerimiento adicional que deba ser cumplido, antes de emitir el Certificado de Aeronavegabilidad Estándar en Colombia.

(c) Determine any additional requirements that must be complied before Colombian Airworthiness Certificate be issued or for any subsequent operations.

2. DETALLES DE CERTIFICACIÓN DE TIPO OACI (ICAO TYPE CERTIFICATE DETAILS)

Los modelos GALAXY y GULFSTREAM 200, de la Empresa Gulfstream Aerospace L.P cumplen con los estándares de aeronavegabilidad definidos en los Anexos 8 y 16 de OACI, respecto a los requisitos de diseño, requisitos de aeronavegabilidad continuada y de ruido. A partir de los documentos presentados por el fabricante se establece que no existe ninguna diferencia que deba ser evaluada.

The models GALAXY and GULFSTREAM 200 of the Gulfstream Aerospace L.P are in compliance with the ICAO annexes 8 and 16 about rules necessities for the design, continued airworthiness conditions and noise compliance. In accordance with the information provided by the manufacturer, it is established that there is no difference that should be evaluated.

3. DETALLES DE ACEPTACIÓN DE TIPO (TYPE ACCEPTANCE DETAILS)

La aplicación para la aceptación del Certificado Tipo de las aeronaves GALAXY y GULFSTREAM 200 fue solicitada por el fabricante el día 05 de Agosto de 2012, se completo el envío de la documentación faltante por parte del fabricante el 3 de Agosto de 2013 y fue aprobada el día 12 de Septiembre de 2013, basada en el Certificado Tipo de la CAAI No. A6IL e incluye los motores Pratt & Whitney Canada PW306A aprobados mediante Certificados Tipo FAA No. E35NE.

Fabricante: Israel Aerospace Industries Limited (from Dec 3, 2006) Israel Aircraft Industries Limited.

Poseedor del TC: Gulfstream Aerospace L. P. (from March 26, 2002)

Certificado Tipo: A6IL

Emitido por: Israel Ministry of Transport – Civil Aviation Administration Model: Galaxy (up to serial number 56) Gulfstream 200 (serial number 57 and on)

The application for Colombian type certificate acceptance of the models GALAXY and GULFSTREAM, was received from the manufacturer on August 05, 2012. The manufacturer sends the information pending on August 3, 2013. The Type Acceptance Certificate was approved on Date: September 12, 2013, based on validation of CAAI Type Certificate No. A6IL, that includes Pratt & Whitney Canada engines PW306A series approved under FAA Type Certificate number E35NE.

Manufacturer: Israel Aerospace Industries Limited (from Dec 3, 2006)

Israel Aircraft Industries Limited

TC Holder: Gulfstream Aerospace L. P. (from March 26, 2002)

GSAC-4.0-8-02
Versión: 01
26/05/2009



Unidad Administrativa Especial de Aeronáutica Civil
REPORTE DE ACEPTACIÓN DE CERTIFICADO DE TIPO
(Type Certificate Acceptance Report)

Page 5

Type Certificate: A6IL

Issued by: Israel Ministry of Transport – Civil Aviation Administration Model: Galaxy (up to serial number 56) Gulfstream 200 (serial number 57 and on)

4. REQUERIMIENTOS DE LOS RAC PARTE NOVENA 9ª
(COLOMBIAN REQUIREMENTS RAC's (Colombian Regulations) PART NINTH)

Los requerimientos establecidos en la parte Novena de los RAC han sido cumplidos y se sustentan en el Certificado Tipo CAAI No. A6IL de enero de 2010 con los siguientes documentos:

The Type Data requirements of RAC Part 9 have been satisfied according to the Type Certificate CAAI Type Certificate No. A6IL dated January 2010 with the following documents:

(1) Certificados Tipos (*Type certificates*):

- CAAI No. A6IL dated January 2010
- FAA No. E35NE Rev.7, dated February 26, 2003

(2) Resumen de los ítems de Certificación (*Summary certification item*)

DATA PERTINENT TO MODELS: GALAXY and GULFSTREAM 200

TC A6IL issued on January 2010 in accordance with the following requirements:

Certification Basis:

- 14 CFR Part 25, effective Feb.1, 1965, including Amendments 25-1 through 25-82.
- 14 CFR Part 36, effective Dec.1, 1969, including Amendments 36-1 through 36-21.
- 14 CFR Part 34, effective Sep.10, 1990, including Amendments 34-1 through 34-2.
- Special conditions for operation up to 45000 feet, per FAA S.C. No. 25-ANM-106.
- Special conditions for High Intensity Radiated Fields (HIRF), per FAA S.C. No. 25-ANM-112.
- Equivalent Safety: FAR 25.1203(a) for Turbine Tail Pipe Fire Detection.
- Equivalent Safety: FAR 25.1305 & 25.1501(b) for Auxiliary Power Unit (APU) Instrumentation and Monitoring Requirements.
- Equivalent Safety: FAR 25.901, 25.1305, 25.1309, 25.1321, 25.1549 for Digital only display of turbine engine high/ intermediate pressure rotor speed (N2).
- Equivalent Safety: All Part 25 Sections, except structural, dealing with stall speeds/related factors for use of 1-g Stall Speed instead of minimum speed in the stall.
- Equivalent Safety: Sections: 1.1, 1.2, 25.101, 25.105, 25.109, 25.113, 25.115, 25.735 and 25.1587 for rejected take-off and landing performance criteria.
- Equivalent Safety: 25.933 (a)(1)(ii) for Thrust Reversers operation.
- Special Conditions for Pilot Compartment View: FAR 25.773(b) per CAAI I.P. F-3.



Unidad Administrativa Especial de Aeronáutica Civil
REPORTE DE ACEPTACIÓN DE CERTIFICADO DE TIPO
(Type Certificate Acceptance Report)

Page 6

ISSUE PAPERS: MODEL GALAXY

IP No.	Stage	Date	Subject	Status/Action
G-1	4	05/03/96	Type Certification Basis	Closed
G-2	1	18/10/93	Determination of Compliance & Conformity	Closed
G-3	2	18/10/93	Environmental Considerations	Closed
G-4	3	28/10/93	Partial Development / Production in Foreign Country – Russia	Closed
A-1	2	02/10/94	Composite Material Construction of	Closed
A-2	2	2/10/94	Air Load Distribution on Wing	Closed

IP No.	Stage	Date	Subject	Status/Action
CI-1	2	02/10/94	Forward Observer's Seat & Associated Systems	Closed
F-1	4	26/12/94	Inadvertent Operation of THRUST REVERSER in Flight	Closed
F-2	2	20/10/96	Stall Protection-Stick Pusher	Closed
N-1	2	02/10/94	Airplane Noise Requirements	Closed
P-1	2	02/10/94	Rapture of Fuel in Tanks in Emergency Landing	Closed
P-2	2	02/10/94	Hot Fuel Certification	Closed



Unidad Administrativa Especial de Aeronáutica Civil
REPORTE DE ACEPTACIÓN DE CERTIFICADO DE TIPO
(Type Certificate Acceptance Report)

IP No.	Stage	Date	Subject	Status/Action
P-3	2	20/10/96	Fuselage Tank – Secondary Barrier	Closed
P-4	3	22/12/94	In Flight Engine Restart – all Engines Failure	Closed
S-1	3	20/10/96	Ditching Emergency Exits for Passengers	Closed
S-2	2	22/12/94	STATIC TEST Wing + Fuselage	Closed
SE-1	4	02/10/94	HIRF	Closed

IP No.	Stage	Date	Subject	Status/Action
SE-2	3	22/12/94	Lighting & Transient Protect. on Avionics & Electrical Operated Systems	Closed
QA-	3	08/11/94	Test & Inspection of Prototype Articles	Closed
QA-2	2	8/11/94	Mat. & Prod. Processes Control	Closed

Number	Description	ISSUE	DATE
4AS000/121144	MASTER DRAWING LIST – FOR COLOMBIAN CERTIFICATION	IW	Agu 05, 2012
4AS/000/981192	Compliance Checklist	New	Dec 13, 1998
4AS/090/951608	GALAXY Basis of Certification	E	Oct 5, 1999
GACD-03-16-DAS-C-1	ELOS	1	May 02, 2012
SA7096SC-T-C-1	ELOS	1	May 02, 2012
Exception	Accomplishment with all Part 25 sections, except structural, dealing with stall speeds/related factors for use of 1-g Stall Speed instead of Minimum Speed in Stall		
	Maintenance Review Board (MRB) Report GULFSTREAM G200	5	May 25, 2012
Master Minimum Equipment List	Federal Aviation Administration Aircraft Evaluation Group, LGB-AEG	5	March 22, 2010



Unidad Administrativa Especial de Aeronáutica Civil
REPORTE DE ACEPTACIÓN DE CERTIFICADO DE TIPO
(Type Certificate Acceptance Report)

Page 8

(3) Documentación técnica del fabricante (*Maintenance Manuals, Operating Manuals and Service Instructions*)

Series	Document	Number	Issue Date	Revision
ALL	Airplane Flight Manual	G200-1001-1	August 15, 2011	18
	Operating Planing Manual	G200-1001-2	December 12, 2007	1
	Wiring Diagram Manual	N/I	October 28, 2012	17
	Quick Reference Handbook	GAC-AC-G200-OPS-0003	October 11, 2011	18
	Cold Weather Operations Manual	N/I	April 26, 2011	5
	Maintenance / operational Placarding procedures Manual	GAC Doc. No. G200-1	March 22, 2010	5
	Aircraft Maintenance Manual	G200-1001-06	October 28, 2012	24
	Aircraft Illustrated Parts Catalogue	N/I	October 28, 2012	22
	Noise Information Manual	N/I	Sept 1, 2011	12
	Fault Isolation Manual	N/I	April 30, 2012	3
	NDT Manual	N/I	April 30, 2012	5
	Maintenance manual Pneumatic and shaft power gas turbine engine	Honeywell PART NUMBER 3800710-1 / 3800710-2	Dec 15, 2008	1
	GALAXY (G200) SERVICE INFORMATION LETTER INDEX		September 25, 2001	
	SERVICE BULLETIN INDEX	ATA listing	November 12, 2012	

N/I: Not Indicated

Type Validation Operational Limitations:

All indicated in the following documents:

- AFM G200-1001-1 VOLUME 1 SECTION I LIMITATIONS.
MAINTENANCE MANUAL - CHAPTER 05 - TIME LIMITS / MAINTENANCE CHECKS (PRE-SB 200-05-280)
- TYPE CERTIFICATE DATA SHEET N° A6IL

GSAC-4.0-8-02
Versión: 01
26/05/2009



5. REQUERIMIENTOS ADICIONALES DE LOS RAC PARTE CUARTA 4ª (ADDITIONAL COLOMBIAN REQUIREMENTS RAC's (Colombian Regulations) PART FOURTH)

A continuación se listan los requerimientos de aeronavegabilidad adicionales para la emisión de un certificado de aeronavegabilidad estándar, definidos en los capítulos II y V de la Parte Cuarta, "Requisitos Generales de Aeronavegabilidad" y en 9.2.3 de las Parte Novena de los RAC.

Additional requirements for the issuance of a Standard Airworthiness Certificate for an aircraft that is going to operate in Colombia, in accordance with RAC's (Colombian Regulations), Part Fourth- Chapters II and Chapter V and in #9.2.3 Part Ninth, are as follows:

Norma (Rule)	Descripción del requerimiento (Description of the Requirement)
4.2.2.3.	AERONAVES CIVILES MOTORIZADAS CON CERTIFICADO DE AERONAVEGABILIDAD ESTÁNDAR DE LA REPÚBLICA DE COLOMBIA (REQUISITOS DE INSTRUMENTOS Y EQUIPO) <i>CIVILIAN ENGINE POWERED AIRCRAFT WITH COLOMBIAN STANDARD AIRWORTHINESS CERTIFICATE (INSTRUMENT AND EQUIPMENT REQUIREMENTS)</i>
4.2.2.4.	TRANSMISOR LOCALIZADOR DE EMERGENCIA (ELT) Uno (fijo), transmisor de dos frecuencias (121.5 y 406.0 MHz). TSO – C126 <i>EMERGENCY LOCATOR TRANSMITER (ELT)</i> <i>One (fixed) 2 frequencies transmitter (121.5 and 406.0 MHz). TSO – C126</i>
4.2.2.5	LUCES DE AERONAVES <i>AIRCRAFT'S LIGHTS</i>
4.2.2.7	INSTRUMENTOS Y EQUIPOS INOPERATIVOS <i>INOPERATIVE EQUIPMENTS AND INSTRUMENTS</i>
4.2.2.8	USO DE TRANSPONDER ATC <i>ATC TRANSPONDER RIGHT USE</i>
4.2.2.10	SISTEMA DE ALERTA DE ALTITUD – Un sistema <i>ALTITUDE ALERT SYSTEM – One system</i>
4.2.2.14	SEÑALAMIENTO DE LAS ZONAS DE PENETRACION DEL FUSELAJE
NORMAS Y REQUISITOS PARA AERONAVES DE SERVICIO AÉREO COMERCIAL DE TRANSPORTE PÚBLICO NO REGULAR	
4.5.6.5.	EQUIPOS PROTECCIÓN CONTRA FUEGO EN LOS BAÑOS <i>LAVATORIES FIRE PROTECTION DEVICES</i>
4.5.6.10.	EQUIPO MISCELÁNEO <i>MISCELLANEOUS EQUIPMENT</i>
4.5.6.11.	REQUERIMIENTO DE SEGURIDAD PARA EL COMPARTIMIENTO DE LA TRIPULACIÓN DE VUELO. <i>COCKPIT SAFETY REQUIREMENTS</i>
4.5.6.16.	INSTRUMENTOS Y EQUIPOS PARA OPERACIONES NOCTURNAS <i>INSTRUMENT AND AEQUIPMENT FOR NIGTH OPERATIONS</i>
4.5.6.17.	INSTRUMENTOS Y EQUIPO PARA OPERACIÓN EN CONDICIÓN DE VUELO POR INSTRUMENTOS O SOBRE EL TECHO. <i>INSTRUMENTS AND EQUIPMENT REQUIRED FOR IFR OR OVER THE MAXIMUN OPERATING ALTITUDE</i>



Unidad Administrativa Especial de Aeronáutica Civil
REPORTE DE ACEPTACIÓN DE CERTIFICADO DE TIPO
(Type Certificate Acceptance Report)

4.5.6.18.	PARA TODOS LOS AVIONES QUE VUELEN A GRANDES ALTITUDES <i>FOR ALL AIRCRAFTS THAT FLIGHT AT HIGH ALTITUDE</i>
4.5.6.20.	EQUIPOS ESTÁNDAR. AERONAVES IMPULSADAS POR TURBINAS <i>STANDAR EQUIPMENT FOR TURBINE POWERED AIRCRAFTS</i>
4.5.6.30.	EQUIPO DE RADIO PARA OPERACIÓN EXTENSA SOBRE AGUA Y OTRAS OPERACIONES <i>RADIO EQUIPMENT FOR EXTENDED OVER WATER OPERATIONS AND OTHER OPERATIONS</i>
4.5.6.26	REGISTRADORES DE DATOS DE VUELO (FDR) – Un sistema. TSO – C124A <i>FLIGHT DATA RECORDER (FDR) – One system. TSO – C124A</i>
4.5.6.33	REQUERIMIENTO DEL EQUIPO DE RADAR METEOROLOGICO – Un sistema <i>WEATHER RADAR EQUIPMENT REQUERIMENTS – One system</i>
4.5.6.34	GRABADORES DE VOZ EN LA CABINA DE MANDO (CVR) – Un sistema TSO – C123A <i>COCKPIT VOICE RECORDER (CVR) – One system TSO – C123A</i>
4.5.6.36	SISTEMA ALERTA DE TRAFICO Y ADVERTENCIA DE COLISION (ACAS II) – Un sistema TSO – C119 <i>AIRBORNE COLLISION AVOIDANCE SYSTEM (ACAS II) – One system. TSO – C119</i>
4.5.6.38	SISTEMA DE ADVERTENCIA Y ALERTA DEL TERRENO (TAWS) – Un sistema TSO – C151 <i>TERRAIN AWARENESS AND WARNING SYSTEM (TAWS) – One system. TSO – C151</i>
NORMAS Y REQUISITOS PARA AERONAVES DE SERVICIO AÉREO COMERCIAL DE TRANSPORTE PÚBLICO NO REGULAR	
4.6.3.4.	COMANDOS DOBLES REQUERIDOS <i>TWIN COMMAD REQUIREMENT</i>
4.6.3.6	REGISTRADORES DE VOZ DE CABINA – CVR <i>COCKPIT VOICE RECORDERS CVR</i>
4.6.3.7.	REGISTRADORES DE DATOS DE VUELO - (FDR) <i>FLIGHT DATA RECORDERS FDR</i>
4.6.3.10.	SISTEMA DE ADVERTENCIA Y ALERTA DEL TERRENO (TAWS) <i>TERRAIN AWARENES AND WARNING SYSTEM</i>
4.6.3.11.	REQUERIMIENTOS DE EQUIPO: AERONAVES QUE LLEVAN PASAJEROS BAJO REGLAS DE VUELO POR INSTRUMENTOS IFR Y VUELOS NOCTURNOS <i>EQUIPMENT REQUIREMENT FOR PASSENGER AIRCRAFTS UNDER IFR OR NIGHT FLIGHTS</i>
4.6.3.12	EQUIPOS DE RADIO Y NAVEGACIÓN EN OPERACIONES DE CONFORMIDAD CON LAS REGLAS DE VUELO POR INSTRUMENTOS (IFR) O EN OPERACIONES EXTENSAS SOBRE EL AGUA. <i>RADIO AND NAVIGATION EQUIPMENT FOR IFR OPERATIONS OR EXTENDED OVER WATER OPERATIONS</i>
4.6.3.13.	SISTEMA DE ALERTA DE TRÁFICO Y ADVERTENCIA DE COLISIÓN (ACAS) <i>AIRBORNE COLLISION AVOIDANCE SYSTEM (ACAS)</i>
4.6.3.15.	REQUERIMIENTOS DEL EQUIPO DE RADAR METEOROLÓGICO DE A BORDO <i>WEATHER RADAR EQUIPMENT REQUERIMENTS – ONE SYSTEM</i>
4.6.3.20.	INDICADOR DE NUMERO MACH <i>MACH INDICATOR</i>
9.2.3 literal d) 4	PLACAS: IDIOMA ESPAÑOL O ESPAÑOL E INGLES <i>PLACARDS: SPANISH OR ENGLISH AND SPANISH</i>



Unidad Administrativa Especial de Aeronáutica Civil
REPORTE DE ACEPTACIÓN DE CERTIFICADO DE TIPO
(Type Certificate Acceptance Report)

Page 11

APENDICE 1 - LISTA DE CHEQUEO DE AERONAVES
(APPENDIX 1 – AIRCRAFT CHECK LIST)

CERTIFICADO TIPO (Type Certificate):	CAAI TC No. A6IL Rev 13-1 Jan 2010
AERONAVE (Aircraft):	GALAXY - GULFSTREAM 200
FABRICANTE (Manufacturer):	Gulfstream Aerospace L.P. Contact: Charly Gaber GALP Airworthiness & Certification Tel:972 3 9356627 Mobile :972 528 117 785 Fax:972 3 9357650 charly.gaber@gulfstream.com Mailing Address:Gulfstream Aerospace LP c/o IAI Dept. 4199 Ben Gurion International Airport 70100 □ ISRAEL http://es.gulfstream.com/
PLANTA MOTRIZ (Engine):	Engine: Pratt & Withney PW306A FAA TC No E35NE
OPERADOR NACIONAL (National Operator):	SEARCA S.A.
FUNCIONARIO(s) (Team):	EDGAR CADENA ANDRES PARRA
REGULACIONES R.A.C. (R.A.C. Regulation):	Paragraph 9.1. d). Paragraph 9.2.3.
DOCUMENTACION (DOCUMENTS)	CUMPLIMIENTO (DOCUMENTOS REVISADOS)
1. DATOS GENERALES DEL CERTIFICADO TIPO (Type Certificate Data Sheets):	REVISION ACTUAL (Actual Issue): 13-1 FECHA DE REVISION (Issue Date): Ene (Jan), 2010 \\Bog7\secretarias\5102-Grupo Tecnico\2012\109 CONCEPTOS TECNICOS - ADMINISTRATIVOS\CONVALIDACIONES DE TC\G-200\06_TC Y TCDSAERONAVE NUMERO DE PAX: Maximum of 19 passengers TRIPULACION: 2 (pilot and copilot) for all flight conditions TECHO DE SERVICIO: 45,000 ft, With both autopilot and yaw damper disengaged: 41,000 ft WEIGHTS (LB/KG) : Ramp 35,600 / 16,148 Take-off 35,450 / 16,080 Landing 30,000 / 13,608 Zero Fuel 24,000 / 10,886



Unidad Administrativa Especial de Aeronáutica Civil
REPORTE DE ACEPTACIÓN DE CERTIFICADO DE TIPO
(Type Certificate Acceptance Report)

<p>2. Lista de Chequeo De Conformidad Código De Aeronavegabilidad <i>(Compliance Check List airworthiness code):</i></p>	<p>GALAXY Compliance Check List (CCL) 4AS/000/98192 GALAXY Basis of Certification 4AS/090/951608</p>															
<p>3. Lista Maestra de Planos <i>(Master Drawing List or Type Build Standard (TBS)):</i></p>	<p>Drawings: LD4AS0011000G001 Rev D and G200-001-050-1</p>															
<p>4. NIVELES EQUIVALENTES DE SEGURIDAD <i>(Equivalent Level Of Safety –ELOS)</i></p>	<table border="1"> <thead> <tr> <th>Number</th> <th>De scription</th> <th>Model</th> <th>Date</th> </tr> </thead> <tbody> <tr> <td>GACD-03-16-DAS-C-1</td> <td>ELOS</td> <td>1</td> <td>May 02, 2012</td> </tr> <tr> <td>SA7096SC-T-C-1</td> <td>ELOS</td> <td>1</td> <td>May 02, 2012</td> </tr> </tbody> </table>				Number	De scription	Model	Date	GACD-03-16-DAS-C-1	ELOS	1	May 02, 2012	SA7096SC-T-C-1	ELOS	1	May 02, 2012
Number	De scription	Model	Date													
GACD-03-16-DAS-C-1	ELOS	1	May 02, 2012													
SA7096SC-T-C-1	ELOS	1	May 02, 2012													
<p>5. EXCEPCIONES <i>(Exceptions)</i></p>	<p>Accomplishment with all Part 25 sections, except structural, dealing with stall speeds/related factors for use of 1-g Stall Speed instead of Minimum Speed in Stall</p>															
<p>6. Plano en tres vistas del conjunto (impreso o copia) <i>(views assembly drawing (Printed or blueprint)):</i></p>	<p>Ver APENDICE 2 - ADJUNTOS See APPENDIX 2 - ATTACHMENTS</p>															
<p>7. Planos de Configuración Interior <i>(Interior configuration Drawings (LOPA):</i></p>	<p>The diagram is a top-down view of an aircraft cabin interior. It shows a central aisle with seats on both sides, numbered 1 through 11. At the front of the cabin (left side of the diagram), there is a galley, cockpit curtain, jump seat, and entry curtain. At the rear (right side), there is a 14-inch monitor, a belted lavatory, and an external bridge rod. Other labels include 'MASTER CONTROLS', 'HANGERS (1) UNDER FLOOR (UP LD)', 'EXIT', '14" MONITOR', 'BELLIED LAVATORY', 'EXTERNAL BRIDGE ROD', 'HANGERS (1) UNDER FLOOR (UP LD)', 'CENTRAL WATER SYSTEM (TO GALLEY)', 'CLIPNET', '14" MONITOR', 'ENTRY CURTAIN', 'HANGERS', and 'STAR SEAT (1)'. Section lines A-A and B-B are indicated.</p>															
<p>8. Manual De Operación De La Aeronave <i>(Aircraft Operacional Manuals):</i></p>	<table border="1"> <tbody> <tr> <td>Airplane Flight Manual</td> <td>G200-1001-1</td> <td>August 15, 2011</td> <td>18</td> </tr> <tr> <td>Operating Planing Manual</td> <td>G200-1001-2</td> <td>December 12, 2007</td> <td>1</td> </tr> </tbody> </table>				Airplane Flight Manual	G200-1001-1	August 15, 2011	18	Operating Planing Manual	G200-1001-2	December 12, 2007	1				
Airplane Flight Manual	G200-1001-1	August 15, 2011	18													
Operating Planing Manual	G200-1001-2	December 12, 2007	1													



Unidad Administrativa Especial de Aeronáutica Civil
REPORTE DE ACEPTACIÓN DE CERTIFICADO DE TIPO
(Type Certificate Acceptance Report)

9. Manual de Cableado (Wiring Manual):	<table border="1"> <tr> <td data-bbox="528 371 802 416">Wiring Diagram Manual</td> <td data-bbox="802 371 1042 416">N/I</td> <td data-bbox="1042 371 1278 416">October 28, 2012</td> <td data-bbox="1278 371 1398 416">17</td> </tr> </table>	Wiring Diagram Manual	N/I	October 28, 2012	17
Wiring Diagram Manual	N/I	October 28, 2012	17		
10. MANUAL DE MANTENIMIENTO (Maintenance Manual):	<table border="1"> <tr> <td data-bbox="528 468 802 524">Aircraft Maintenance Manual</td> <td data-bbox="802 468 1042 524">G200-1001-06</td> <td data-bbox="1042 468 1278 524">October 28, 2012</td> <td data-bbox="1278 468 1398 524">24</td> </tr> </table>	Aircraft Maintenance Manual	G200-1001-06	October 28, 2012	24
Aircraft Maintenance Manual	G200-1001-06	October 28, 2012	24		
11. CATALOGO ILUSTRADO DE PARTES (Illustrated Parts Catalogue):	<table border="1"> <tr> <td data-bbox="528 573 802 629">Aircraft Illustrated Parts Catalogue</td> <td data-bbox="802 573 1042 629">N/I</td> <td data-bbox="1042 573 1278 629">October 28, 2012</td> <td data-bbox="1278 573 1398 629">22</td> </tr> </table>	Aircraft Illustrated Parts Catalogue	N/I	October 28, 2012	22
Aircraft Illustrated Parts Catalogue	N/I	October 28, 2012	22		
12. BOLETINES DE SERVICIO, (Service Bulletins):	Service Bulletins digital source: \\Bog7\secretariasa\5102-Grupo Tecnico\2012\109 CONCEPTOS TECNICOS - ADMINISTRATIVOS\CONVALIDACIONES DE TC\G-200\07_MANUALES Y MMEL\Manuales CD 1\SB				
13. DIRECTIVAS DE AERONAVEGABILIDAD (Airworthiness Directives):	PAGINA WEB CIVIL AVIATION AUTHORITY OF ISRAEL http://en.mot.gov.il/index.php?Itemid=36 ADs: http://en.caa.gov.il/index.php?option=com_content&view=article&id=181&Itemid=82				
14. CERTIFICACION DE RUIDO (Noise Compliance):	Refer to AFM Volumen 2 Supplement 12				
15. OTROS (Others RVSM, PBN, IFR, etc):	RVSM: Refer to AFM Volumen I Section I RNP: AFM Volumen 2 Supplement 1 Day & Night Instrument Flight Rules (IFR) Flight info known Icing Conditions Extended over water (Ditching Structural Provisions & Equipment – FAR 25.801,25.1411 & 25.1415 Category II Landing Approach Reduced Vertical Separation Minimum (RVSM)				
16. BASES DE CERTIFICACIÓN (Certification Bases) :	- 14 CFR Part 25, effective Feb.1, 1965, including Amendments 25-1 through 25-82. - 14 CFR Part 36, effective Dec.1, 1969, including Amendments 36-1 through 36-21. - 14 CFR Part 34, effective Sep.10, 1990, including Amendments 34-1 through 34-2.				



APENDICE 2 - ADJUNTOS (*APPENDIX 2 - ATTACHMENTS*)

Los siguientes documentos son adjuntos de este informe:
The following documents are attached to this report:

- Copia del Certificado de Tipo de AACI, Numero A6IL
Copy of CAAI Type Certificate, Number A6IL.
- Copia de la Hoja de Datos del Certificado Tipo para el motor Numero E35NE (Pratt & Whitney).
Copy of TCCA Engine Type Certificate Data Sheet, Number E35NE (Pratt & Whitney).
- Otros: Vista planos en 3 dimensiones.
(Other): Airplane Drawing Three Views.

Firmas (*Signatures*)

.....
Andres E. Parra Catama
Inspector de Seguridad Aérea
(UAEAC – Air Safety Inspector)

.....
Edgar L. Cadena Cañón
Jefe de Grupo Técnico
(UAEAC - Technical Group Chief)

Dated: September 12th, 2013



Unidad Administrativa Especial de Aeronáutica Civil
REPORTE DE ACEPTACIÓN DE CERTIFICADO DE TIPO
(Type Certificate Acceptance Report)

STATE OF ISRAEL
MINISTRY OF TRANSPORT
CIVIL AVIATION AUTHORITY

A6IL
Revision 13-1
Gulfstream Aerospace L.P.
GALAXY
GULFSTREAM 200 (Note 10)
January, 2010

TYPE CERTIFICATION DATA SHEET NO. A6IL

This Data Sheet which is part of Type Certificate No. A6IL prescribes conditions and limitations under which the aircraft for which the Type Certificate was issued meets the airworthiness requirements of the Aviation Regulations (Certification Procedures for Aircraft and Parts thereof) 1977 תקנות הטיס - תשל"ז

Type Certificate Holder (Note 9): GULFSTREAM AEROSPACE L.P.
Ben Gurion Airport 70100, Israel.

Type Certificate Holder Record: Israel Aircraft Industry LTD. transferred TC A6IL to GULFSTREAM AEROSPACE L.P. on March 26, 2002.

I. MODEL GALAXY (Transport Category) Approved December 15, 1998

Manufacturer's Serial Numbers eligible: Model: GALAXY
S/N: 004 through 056, S/N 003 (See NOTE 5).

II. MODEL GULFSTREAM 200 (Transport Category) Approved December 31, 2001 (NOTE 8)

Manufacturer's Serial Numbers eligible: Model: GULFSTREAM 200
S/N: 057 and subsequent.

Modification MOD 7231 introduces the "GULFSTREAM 200" model designation. The "GULFSTREAM 200" is only a name change from the former "GALAXY". The "GULFSTREAM 200" model is identical to "GALAXY" model except for the model designation.

DATA PERTINENT TO ALL MODELS

Engines: 2 Pratt & Whitney Canada engines PW306A (Turbofan)
per DOT Canada Type Certificate Data Sheet E-22 REV. 6

Fuel: Conforming to Pratt & Whitney Company Specifications **CPW 204**
as per LIMITATIONS SECTION of the approved AFM.

Oil: Conforming to Pratt & Whitney Company Specification **PWA 521**

Fuel Control Computer: Two HAMILTON STANDARD fuel control computers

Page No.	1	2	3	4	5	6	7
Rev.No	13-1	10	13-1	10	12	13-1	13-1



Unidad Administrativa Especial de Aeronáutica Civil
REPORTE DE ACEPTACIÓN DE CERTIFICADO DE TIPO
(Type Certificate Acceptance Report)

U.S. DEPARTMENT OF TRANSPORTATION FEDERAL AVIATION ADMINISTRATION TYPE CERTIFICATE DATA SHEET E35NE	TCDS NUMBER E35NE REVISION: 7*
	PRATT & WHITNEY CANADA MODELS: PW305 PW306A PW305A PW306B PW305B PW306C

February 26, 2003

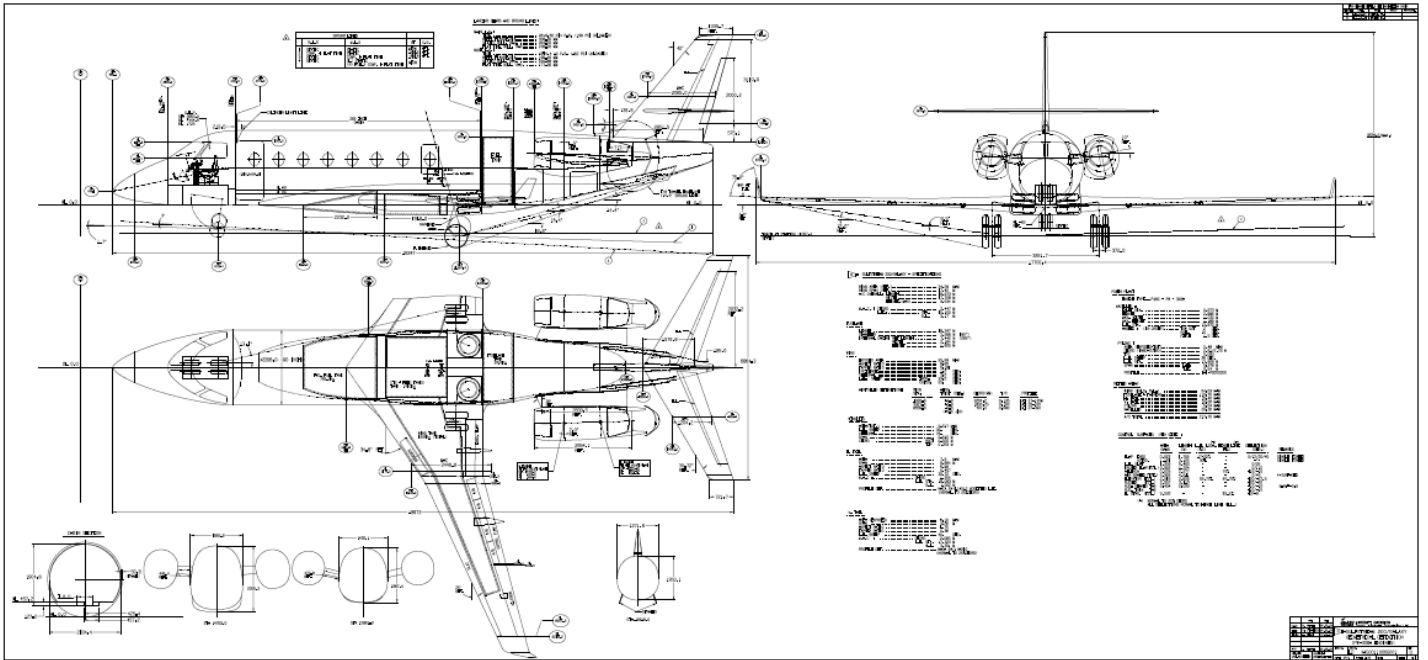
Engines of models described herein conforming with this data sheet (which is part of Type Certificate Number E35NE) and other approved data on file with the Federal Aviation Administration, meet the minimum standards for use in certificate Regulations, provided they are installed, operated, and maintained as prescribed by the approved manufacturer's manuals and other approved instructions.

TYPE CERTIFICATE (TC) HOLDER: Pratt & Whitney Canada Corp.
 (Formerly Pratt & Whitney Canada, Inc.)
 1000 Marie-Victorin
 Longueuil, Quebec
 Canada J4G 1A1

I. MODELS	PW305	PW305A	PW305B	PW306A	PW306B	PW306C
TYPE	Twin-spool axial flow turbofan propulsion engine incorporating a single-stage fan, multi-stage axial-centrifugal compressor, annular combustor, two-stage high pressure turbine, and three-stage low pressure turbine.					
RATINGS	POUNDS THRUST / SEE NOTES 4 AND 14					
Normal takeoff (5 minutes)	5,225	4,679	5,204	6,040	6,050	5,770
Maximum takeoff (5 minutes)	5,225	4,679	5,266	6,040	---	---
Maximum continuous	4,750	4,679	4,483	6,040	6,050	5,770
FUEL TYPE	For PW305, PW305A, PW305B: Refer to Pratt & Whitney Canada (PWC) Service Bulletin 24004 or Maintenance Manual 30B1401. For PW306A: Refer to Maintenance Manual 30B1412. For PW306B: Refer to Maintenance Manual 30B4132. For PW306C: Refer to Maintenance Manual 30B4422.					
OIL TYPE	For PW305, PW305A, and PW305B: Refer to PWC Service Bulletin 24001 or Maintenance Manual 30B1401. For PW306A: Refer to Maintenance Manual 30B1412. For PW306B: Refer to Maintenance Manual 30B4132. For PW306C: Refer to Maintenance Manual 30B4422.					
EQUIPMENT/COMPONENTS	Fuel pump; fuel filter and electrical impending bypass indicator; control system-dual channel FADEC with dedicated power source; and provision for fuel flowmeter are standard equipment as shown in the Approved Parts List. Required equipment also includes a chip detector or other metallic debris-detecting device. For output drive specification, accessory drives, principal dimensions, weights, inertias, and center of gravity (CG) locations, refer to the Installation Manual. For additional information, refer to the Installation Manual or to the Parts List.					



Unidad Administrativa Especial de Aeronáutica Civil
REPORTE DE ACEPTACIÓN DE CERTIFICADO DE TIPO
(Type Certificate Acceptance Report)



Airplane Drawing Three Views.